



Map 7-5 Environmentally Sensitive Areas



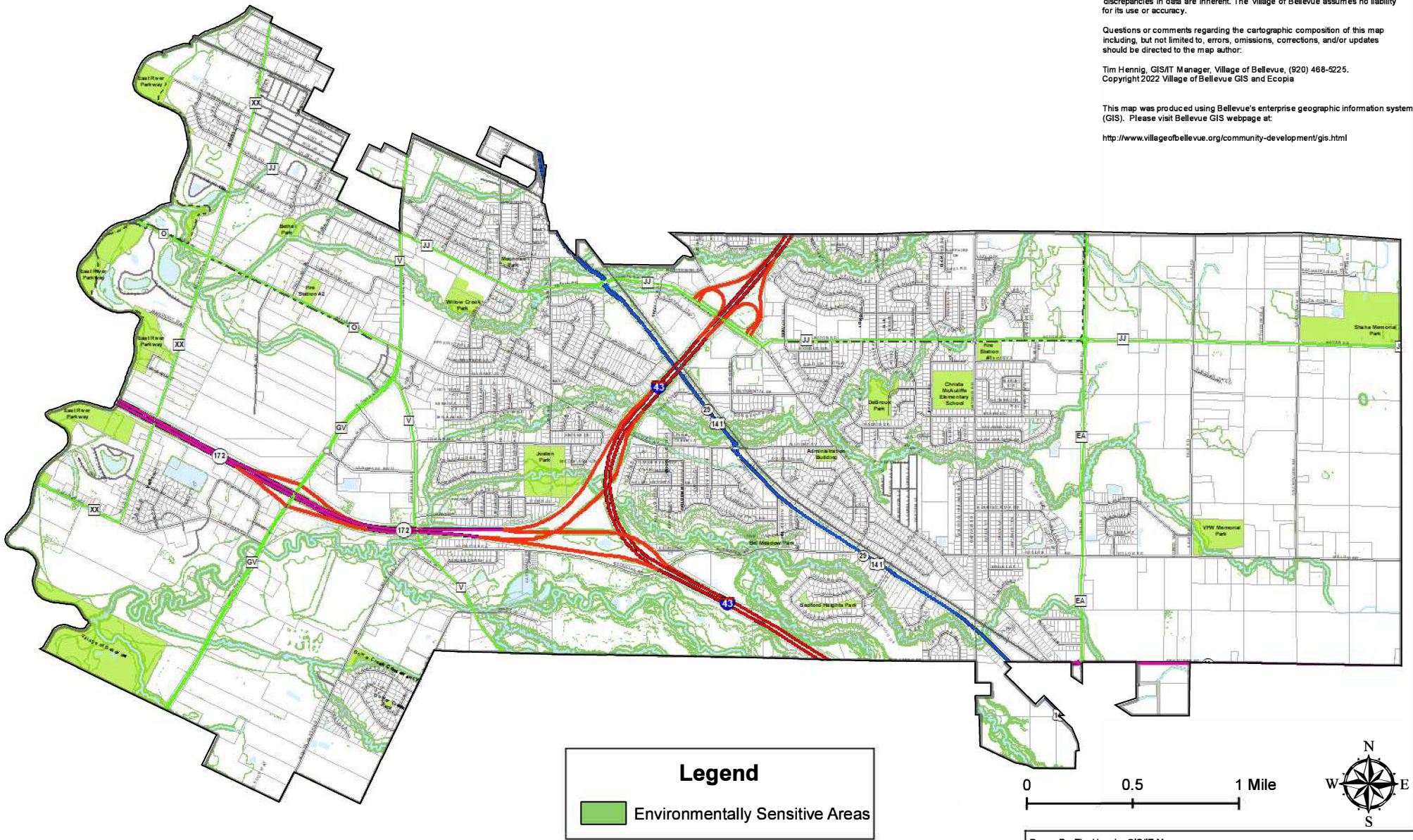
Disclaimer:

This map was produced for the exclusive use of the officials of the Village of Bellevue. The data presented has been compiled from various sources, each of which introduces varying degrees of inaccuracies or inconsistencies. Such discrepancies in data are inherent. The Village of Bellevue assumes no liability for its use or accuracy.

Questions or comments regarding the cartographic composition of this map including, but not limited to, errors, omissions, corrections, and/or updates should be directed to the map author:

Tim Hennig, GIS/IT Manager, Village of Bellevue, (920) 468-5225.
Copyright 2022 Village of Bellevue GIS and Ecopia

This map was produced using Bellevue's enterprise geographic information system (GIS). Please visit Bellevue GIS webpage at:
<http://www.villageofbellevue.org/community-development/gis.html>



Note: This map is for general reference and general planning purposes only. It is not intended for detailed planning.

Legend

Environmentally Sensitive Areas

Source: Brown County Planning Commission, 2022

Drawn By: Tim Hennig, GIS/IT Manager	
Inspected By: Andrew Vissers, Community Development Director	
File: Q:\Community Development\Comprehensive Plan Maps\Figure 7-5 Environmental Sensitive Areas.mxd	
Date: August 11, 2022	Scale: 1 in = 1 miles